

Fault Prevention

Prevent machine downtimes and monitor your factory's consumption.



What is Fault Prevention?

Fault Prevention is an IoT device that collects and analyzes data from machines, preventing operational downtimes and supporting production personnel in both routine and non-routine maintenance.

Thanks to the aid of an Artificial Intelligence system, Fault Prevention:

01. Identifies and signals anomalies in a predictive manner.

02. Provides detailed instructions to operators to resolve anomalies and machine downtimes, interacting with them in natural language.

03. Monitors machine consumption, fostering energy efficiency.

Technical Specifications



■ **01**
Modbus TCP/RTU interface for direct integration.

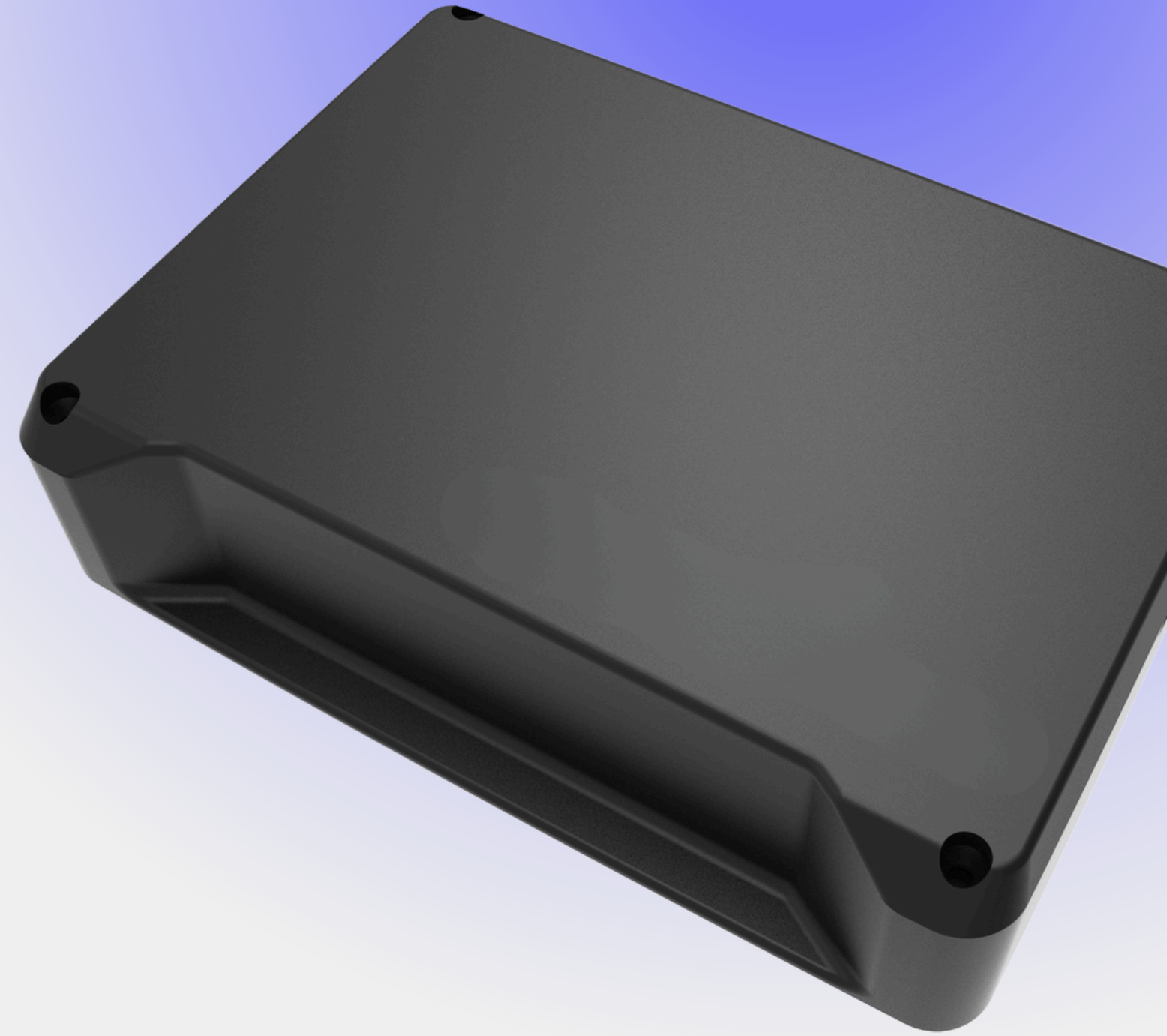
■ **04**
2G/3G/4G/5G Module for operation without an internal network.

■ **02**
Analog/Digital Input Module for reading even without a PLC.

■ **05**
Amperometric clamps for precise measurements without modifying the current installation.

■ **03**
Ethernet and Wi-Fi connectivity.

■ **06**
API for integration with BI, MES, and ERP systems.



01

Configuration

- During installation, the device allows, through a wizard:
- The selection of sensors/values to be monitored.
- The classification of zones/areas for better recognition and the initial identification of the relationships between probes/sensors/variables.
- The upload of technical documents for the machines (PDF or TXT), useful for the AI to provide assistance and generate rules.

02

Training Phase

- The device will monitor the data and correlations among sensors, creating personalized rules. During this phase, any anomaly reports will be manually verified by operators to enhance the training of the artificial intelligence.

03

Operation

- After training, Fault Prevention:
- Analyzes data in real time to flag even the smallest variations useful for predictive maintenance.
- Monitors consumption to optimize efficiency from a 5.0 perspective.
- Provides detailed instructions regarding anomalies to operators, based on documents uploaded during configuration.
- Operates both with an Internet connection and offline, thanks to the GSM module.

ROI (Return on Investment)

50%

from reduced downtime

Optimization of operating costs: an average saving of 10.5%, thanks to planned interventions.

05



Fault Prevention Cloud

Fault Prevention Cloud

The Cloud platform allows complete data management with maximum security:

- **Real-time monitoring of the main KPIs through a simple and intuitive dashboard.**
- **Extraction of graphical data for in-depth analysis.**
- **Integration with external systems via dedicated APIs.**

Investing in the efficiency of your production today means saving tomorrow. **Fault Prevention is the solution you've been waiting for.**

